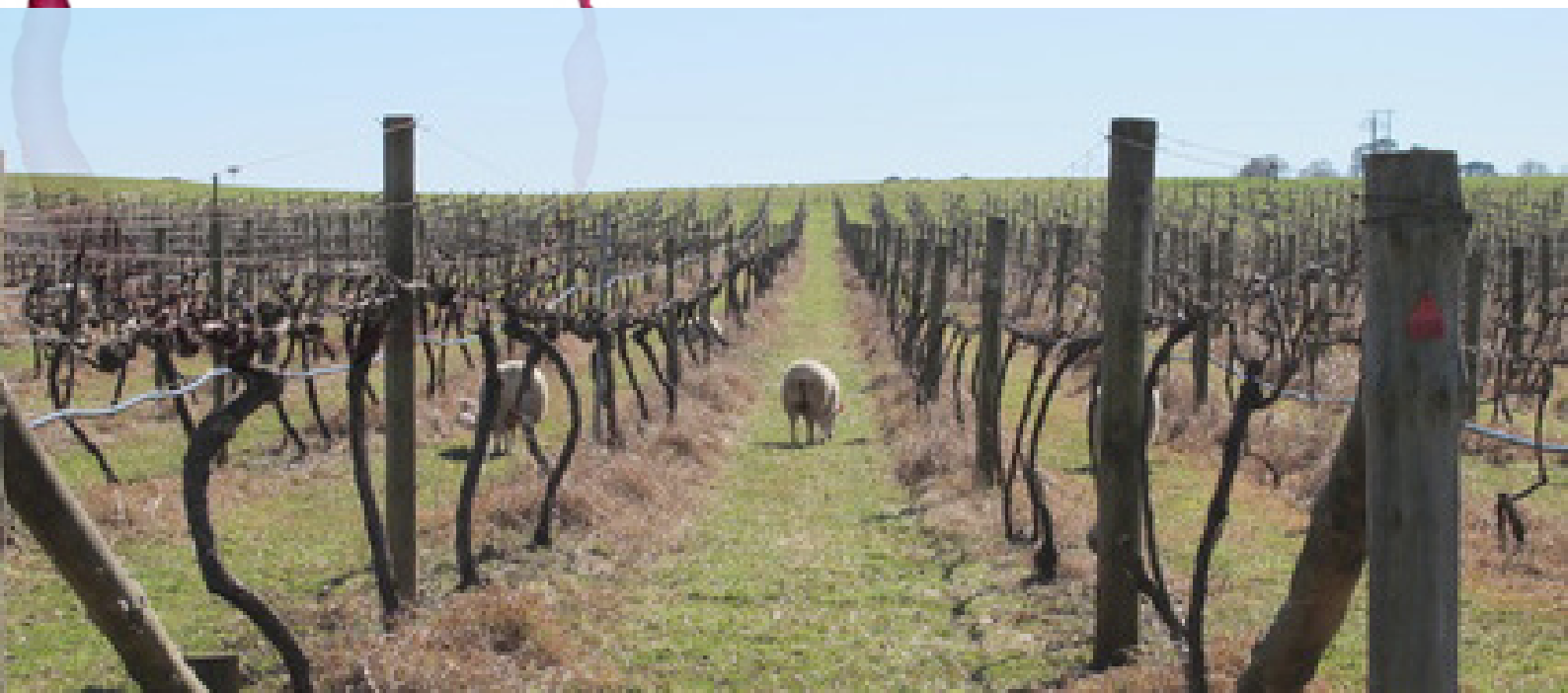




COURABYRA WINERY TOUR



SUPPORT OUR LOCAL INDUSTRY

The Tarcutta Landcare area is home to a vast range of different industries including the production of sheep, beef, cropping, truffles and wine. We aim to support, and learn about, all of our local industry.

Come join us for a guided vineyard tour around the Courabyra Winery, which sits in the very north of the Tarcutta Landcare boundary. This will be followed by a two course lunch, consisting of main and dessert, at the winery restaurant.

COURABYRA (KOO-RAH-BY-RAH)

The neighbouring vineyards of Brian & Cathy Gairn (Courabyra Vineyard est 1993) and Stephen Morrison (Revee Estate, est 1981) mark the vast stretch of landscape along Courabyra Road.

Cathy and Stephen are brother and sister from a family of eleven children; they have come together to create Courabyra Wines. The collaboration between the individual characters and microclimates of each vineyard provided an opportunity to develop a unique palette of aromas and flavours.

LEARN ABOUT THE ART OF WINE PRODUCTION



SUNDAY 4TH SEPTEMBER 2016
11:00 AM - 2:00 PM



WHERE: COURABYRA WINERY,
805 Courabyra Rd
(6km north west of Tumbarumba)



COST: \$20 for Tarcutta Landcare members. \$35 for non-members.
(includes lunch and glass of Courabyra Wine)



RSVP by Monday 29 August
m: 0429 458 717
e: mgorham@mli.org.au

This activity is part of the Local Landcare Coordinators Initiative



Local Land
Services

The Local Landcare Coordinators Initiative is funded by the NSW Government, and is supported through the partnership of Local Land Services and Landcare NSW.

